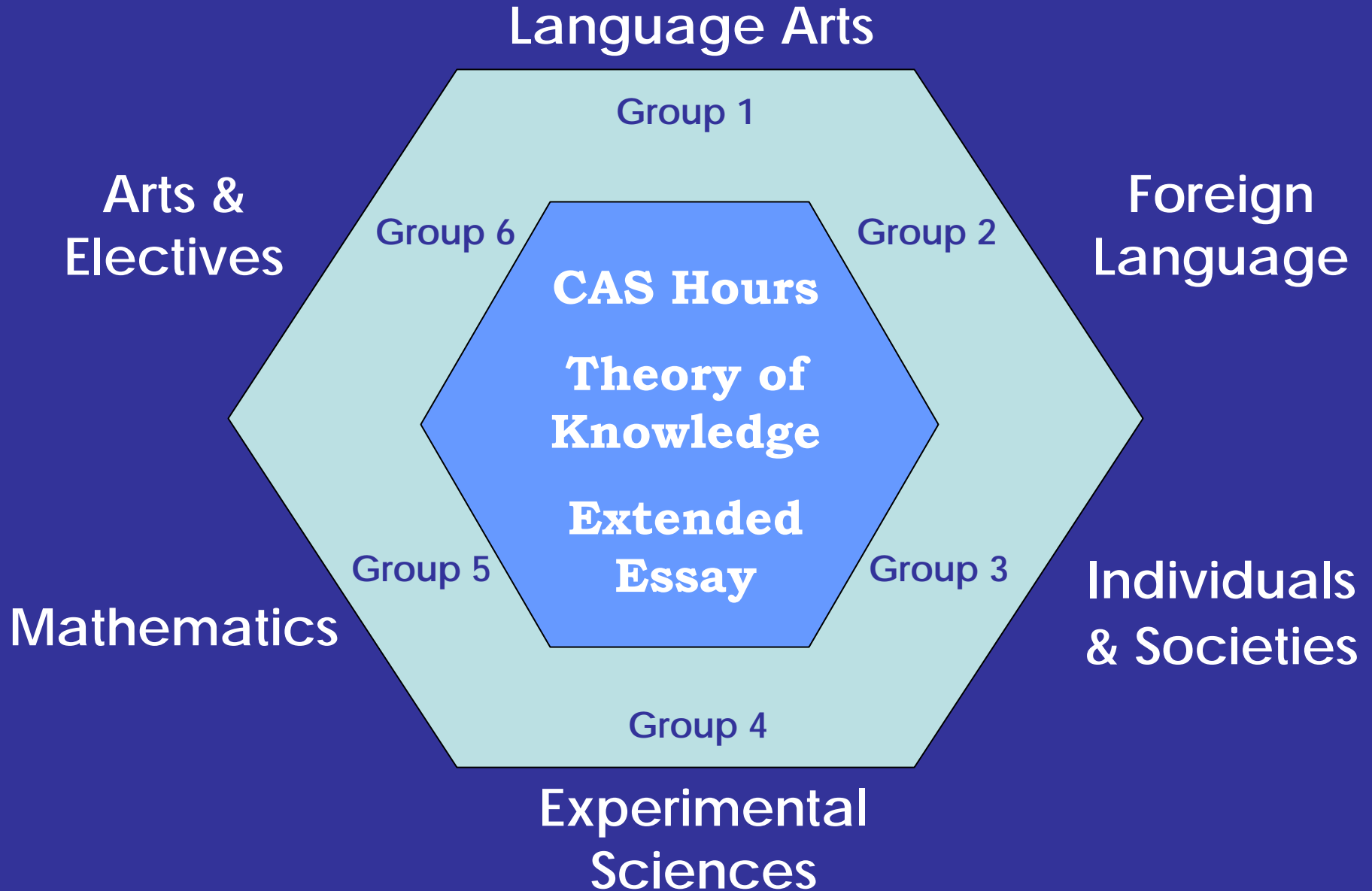






DIPLOMA PROGRAM CURRICULUM



IB Diploma Requirements

HIGHER LEVEL (HL) EXAMS

- 3 Higher Level exams
- HL exams = 240 contact hours
- All 3 HL exams are taken senior year

STANDARD LEVEL (SL) EXAMS

- 3 Standard Level exams
- SL exams = 150 contact hours
- Up to two can be taken junior year

• **Students must also complete: CAS, TOK & EE**



Group 1- Language Arts

Pre- IB English I



Pre- IB English II



IB English III /
AP English Language



IB English IV /
AP English Literature

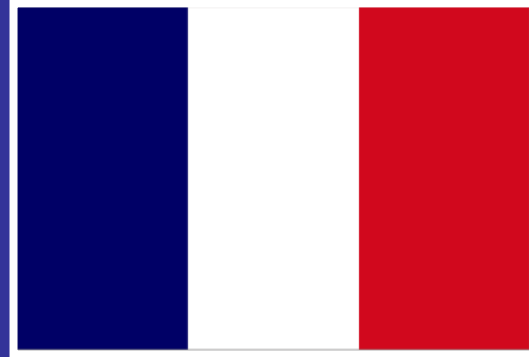
HL



Group 2- Foreign Language



Spanish



French



Italian



German

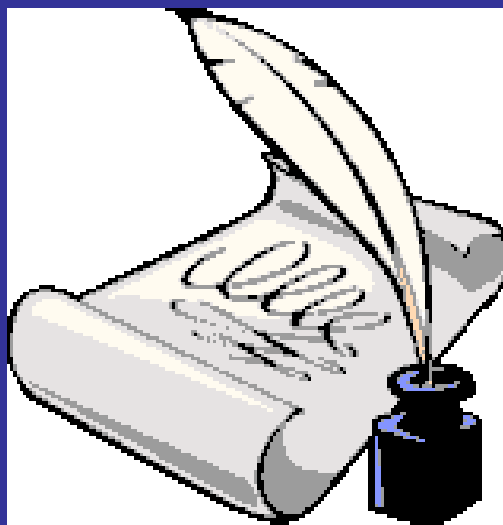
HL

SL



Group 3- Individuals & Societies

History





History Track (SL)

Pre IB/or AP World History



AP European History



IB Contemporary (SL)

SL



History Track (HL)

Pre IB/or AP World History



AP European History



IB/AP American History



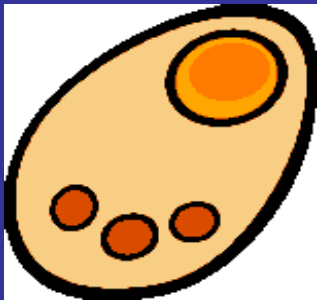
IB Contemporary History

HL



Group 4- Experimental Sciences

Biology

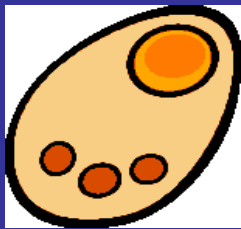


Chemistry



Physics





Biology Track

Pre IB Biology I



Pre IB Chemistry I



IB Biology II (SL)



IB Biology III (HL)

HL

SL



Chemistry Track

Pre IB Biology I



Pre IB Chemistry I



IB Chemistry II (SL)



IB Chemistry III (HL)

HL

SL



Physics Track

Pre IB Chemistry I



Physics Honors



AP Physics



IB Physics III (SL/HL)

HL

SL



Group 5- Mathematics

Math Studies

Integrated Math:

(75% Pre-Cal, 25% Calculus)

Math Methods

75% Calculus, 25% Statistics

HL Mathematics

Advanced Calculus & Statistics

Math Studies

INTEGRATED MATH TRACK

Honors Geometry



Honors Algebra II



Pre IB Math Studies I



IB Math Studies II (SL)

SL

Math Methods

CALCULUS TRACK

Honors Geometry* / H Algebra II



Honors Pre Calculus



AP Calculus AB



IB Calculus (SL)

* Summer course required

SL

HL Mathematics

ADVANCED CALCULUS & STATISTICS TRACK

H Geometry* / H Algebra II*



Pre-Calculus / AP Calculus AB



AP Calculus* / AP Statistics



HL Mathematics

HL

* Summer course required



Group 6- Arts & Electives

Music



Art



IB Electives





Music

INSTRUMENTAL TRACK

Band I

Pre IB Music I



Marching/Concert Band II

Pre IB Music II



Marching/Concert Band III

IB Music III



Marching/Concert Band IV

IB Music IV

HL

SL



Music

VOCAL TRACK

Vocal Ensemble I

Pre IB Music I



Vocal Ensemble II

Pre IB Music II



Vocal Ensemble III

IB Music III



Symphonic Band IV

IB Music IV

HL

SL



Art

RESEARCH TRACK

Pre IB Art I



AP Art History or Pre IB Art II



IB Visual Research Art I



IB Visual Research Art II

IB Exam: 60% Research/40% Studio

SL



Art

STUDIO TRACK

Pre IB Art I



Pre IB Art II



IB Studio Art I



IB Studio Art II

IB Exam: 60% Studio/40% Research

HL



IB Electives

Psychology



Business



**Computer
Programming**



2nd Foreign Language



2nd Experimental Science



HL

SL



Psychology

AP Psychology

(Recommended)

Or Intro to Psychology/Sociology



IB Psychology I



IB Psychology II

HL

SL



Business

Legal Aspects of Business



Accounting 1



IB Business Management

HL

SL



Computer Science

Computer Programming (HTML/JAVA)



Computer Programming (C++/JAVA)



AP Computer AB



IB Computer Science

HL

SL

TO EARN THE IB DIPLOMA

- Complete EE, TOK, and CAS
- Complete all IB assessments
- Take six exams
(one from each group)
- Assessments are on 1-7 scale
- Must accumulate 24 points
total on six assessments

CORAL GABLES SENIOR HIGH SCHOOL



**CELEBRATING 20 YEARS AS AN
IB WORLD SCHOOL**